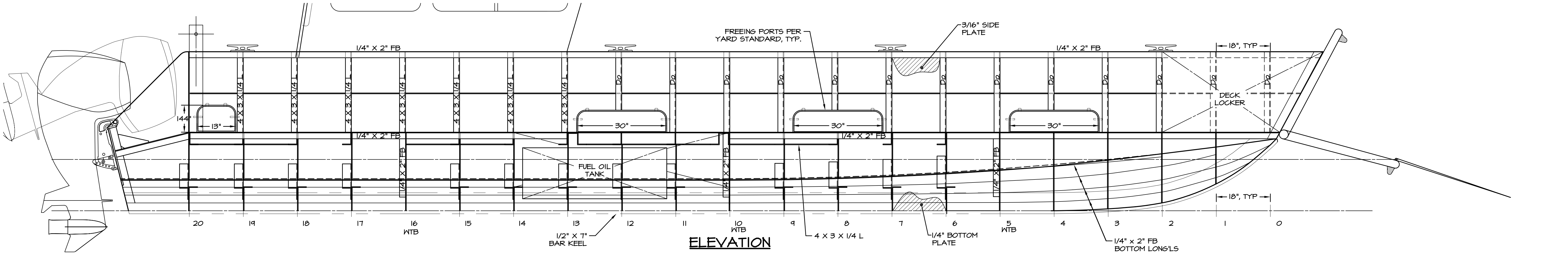
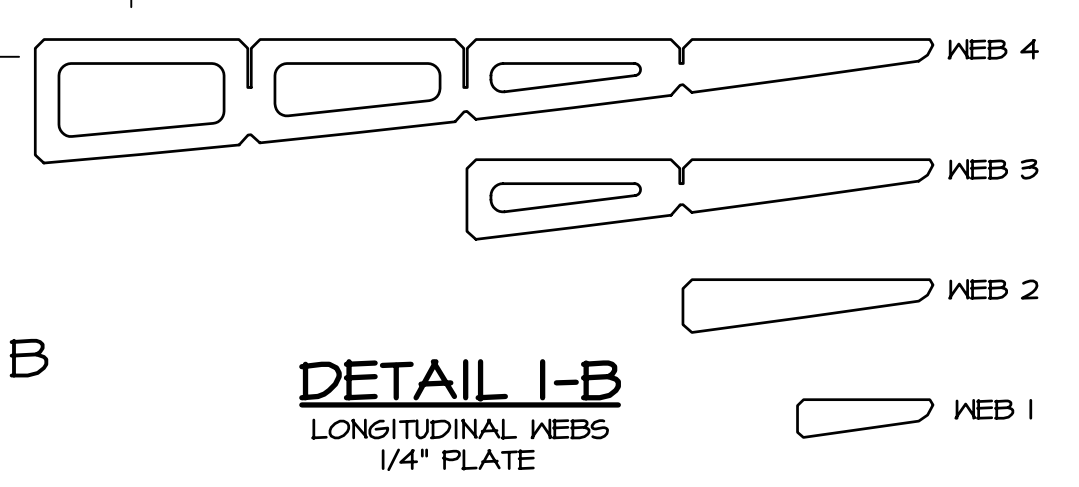
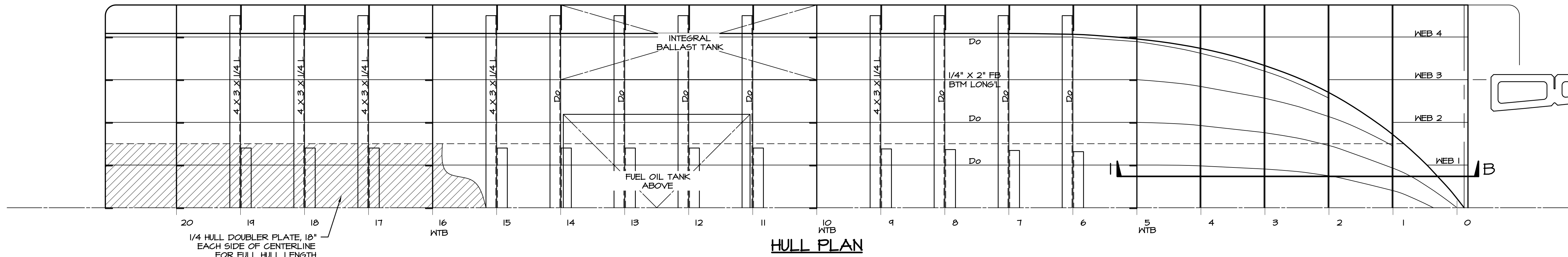
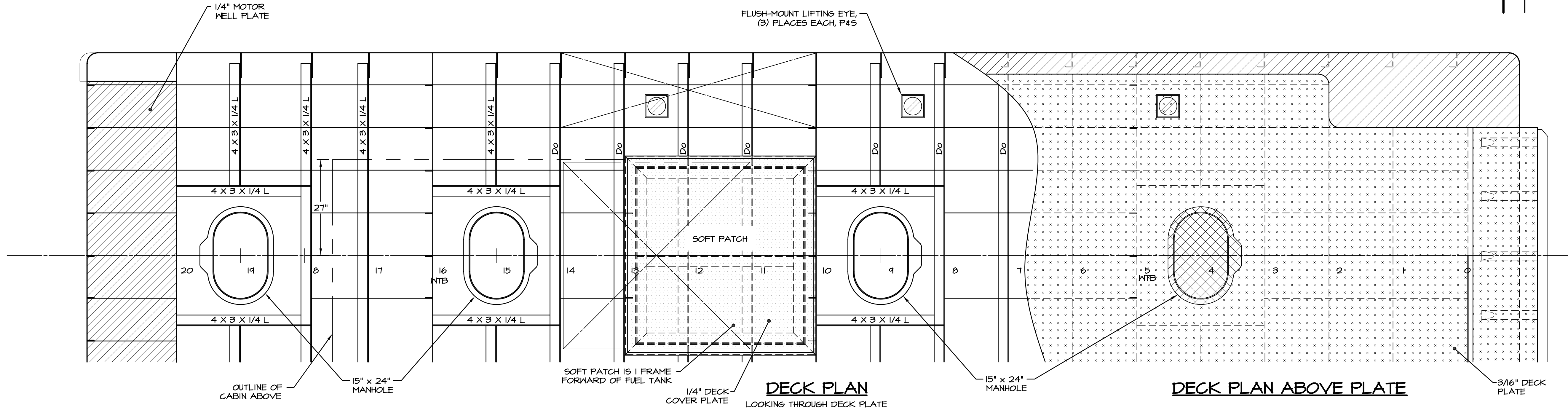


REVISIONS			
LTR	DESCRIPTION	DATE	APPROVED
-	FIRST ISSUE	4/23/09	



**GENERAL NOTES**

- HULL PLATING AND KEEL ARE TO BE ALLOY 5083-H116, CONFORMING TO ASTM-B428-04 FOR MARINE ALLOYS. OTHER ALUMINUM SHALL NOT BE USED.
- EXTRUSIONS ARE TO BE ALLOY 5456-H11 OR ALLOY 6061-T6 (ASTM-B209).
- THE DECK PLATING SHALL BE 3/16 INCH 5083 MARINE ALLOY FIVE-BAR TREADPLATE, CONFORMING TO ASTM-B428-04 FOR MARINE ALLOYS.

<b>SEACRAFT DESIGN</b> LLC		PROJECT KANTER YACHTS 9 M LANDING BARGE	
NAVAL ARCHITECTS & ENGINEERS		TITLE <b>HULL CONSTRUCTION</b>	
P.O. Box 234, STURGEON BAY, WI 54235		DRAWN LRB	DATE 4/23/09
		JOB NO. 09012	DWG NO. 116-01
		SCALE 3/4" = 1'-0"	REV. -
		SHEET 1 OF 1	